

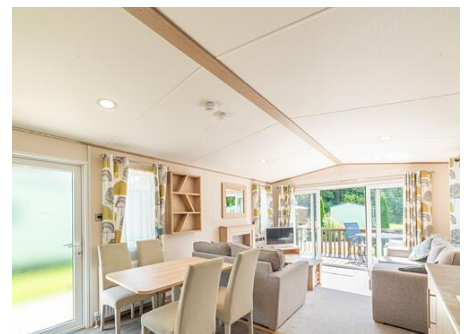
# Discover Parks

*Where life feels right*

## ABI Beverley. 2 Bedrooms 39 x 12

- Pre-owned model
- Front patio doors
- Feature fireplace
- Free standing furniture
- En-suite bathroom
- Family shower room
- Great value

£47,995



## ABI Beverley

At Arrow Bank Country Holiday Park

Set on a stunning plot with a front deck, the ABI Beverley is a bright and airy holiday home packed with impressive features.

The spacious open-plan living area is flooded with natural light, thanks to the large sliding patio doors that lead out to the front deck – ideal for summer relaxation with outdoor furniture adding extra living space. Inside, a charming log-effect fire provides warmth on cooler nights, while two generously sized sofas offer plenty of seating.

The kitchen and dining area is designed for convenience, with a glazed side entrance door letting in even more light. The dining table comfortably seats six, and the kitchen is well-equipped with modern appliances, including a built-in microwave and fridge freezer.

The twin bedroom is adjacent to a family shower room, while the roomy master bedroom boasts a modern en-suite with a bath and shower overhead. There's also plenty of wardrobe space for storage, making this holiday home both stylish and practical.

For more information please contact our Ownership Team today on 01568 708326 or email us

